

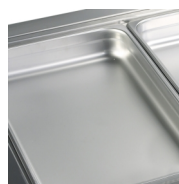
CW3/V

Cooling Well GN1/1

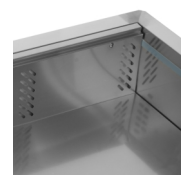


Product Features

- Stainless steel
- Electronic thermostat
- Accepts GN1/1 pan(s) (not supplied)
- Ventilated cooling



Designed for GN1/1 pans, not supplied



Ventilated cooling

Design and Material			Measures and Content			Power and Consumption		
Number of dividers	pcs	4	Capacity GN Pans	pcs	3	Energy Consumption	kWh/24h	3.84
Exterior Finish		SS304	Temperature Range	°C	+2 to +8	Energy Consumption	kWh/h	0.16
Interior Finish		SS304	Climate Class		4	Annual Energy Cons.	kWh/year	1402
			Gross / Net Weight	kg	52 / 42	Input Power	W	122
			Gross / Net Volume	l	161 / 96	Voltage / Frequency	V/Hz	220-240/50
						Noise Level	dB(A)	42
			Cooling and Functions			Dimensions		
			Type of Controller		Electronic	Build In Dimension (WxD)	mm	1100 x 665
			Type of Cooling		Ventilated	Internal Dimension (WxDxH)	mm	1014 x 508 x 186
			Type of Defrost		Automatic	External Dimension (WxDxH)	mm	1122 x 688 x 636
			Refrigerant		R290	Packed Dimension (WxDxH)	mm	1176 x 760 x 742
			Refrigerant Charge	g	100	40ft Container Load	pcs	90
			Thermometer		Yes			